

# AFFINITY Crystal

CLEAR MATRIX IMPRESSION MATERIAL

## TEMPORIZATION

WHEN FABRICATING TEMPORARY VENEERS WITH A LIGHT-CURED COMPOSITE, **AFFINITY CRYSTAL** CLEAR MATRIX IMPRESSION MATERIAL PROVIDES A CLEAR SOLUTION!

From the **AFFINITY™** line of 3rd generation impression material comes **AFFINITY CRYSTAL**, an advanced silicone matrix material you can light-cure through. Diamond clear and ultra-durable, **AFFINITY CRYSTAL** is the only matrix material to utilize branched resin chemistry, resulting in greater procedural efficiency, higher tear strength, extreme durability, and the most predictable results.



### AMAZING CLARITY

Easy to place, **AFFINITY CRYSTAL** minimizes the formation of flash, both interproximal and gingival, by flowing into, and accurately duplicating, the embrasure areas. Its 100% transparency controls flash formation by visually verifying seating and adaptation of the filled matrix, thereby decreasing finishing time. Voids and air bubbles in the temporary composite material can also be detected easily.

### EXTREME EFFICIENCY, LESS CHAIR TIME

With a working time of 0:45 seconds and an intraoral cure time that can be as short as 0:90 seconds (for a maximum procedure time of 2:15 minutes), **AFFINITY CRYSTAL** is far more efficient than traditional procedures using putty, alginate, and formed matrices. You, and your patients, will appreciate the shorter chair time.

### PREDICTABLE RESULTS

The fabrication of functional, esthetic, and durable temporaries is a crucial step in the veneer procedure and should not be left to chance. When done correctly, temporary veneers preserve the preparations – ensuring a proper fit of the final veneers, maintaining tissue health, and providing the patient with a preview of how their final veneers will look and feel. Achieve accurate, predictable results with **AFFINITY CRYSTAL**.

“**AFFINITY CRYSTAL** is easy to trim and duplicates the patient’s dentition and embrasure areas precisely. It’s my matrix material of choice for veneers because it provides enduring water-clear transparency, without turning yellow.”

Dr. Robert Margeas, DDS, Des Moines, IA



#### AFFINITY CRYSTAL 2-PACK

Contains: 2-50mL cartridges, mixing tips, instructions/SDS

#### AFFINITY CRYSTAL 6-PACK

Contains: 6-50mL cartridges, mixing tips, instructions/SDS

#### AFFINITY CRYSTAL 12-PACK

Contains: 12-50mL cartridges, instructions/SDS

\*mixing tips not included

CLINICIAN'S CHOICE®  
DENTAL PRODUCTS INC.

www.clinicianschoice.com

# AFFINITY Crystal

CLEAR MATRIX IMPRESSION MATERIAL

## CLINICAL TECHNIQUE



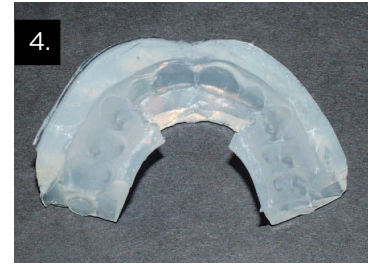
1. Two mottled centrals with a diastema to be treated with porcelain veneers. Length of #8 to be increased with electro surgery.



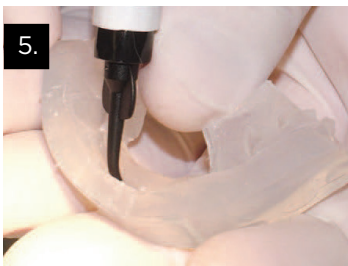
2. Fill a clear, non-perforated tray with AFFINITY CRYSTAL.



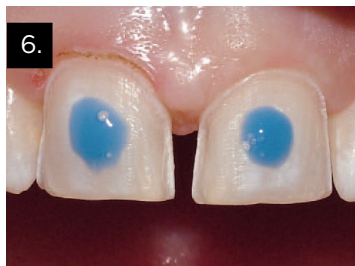
3. Place tray and AFFINITY CRYSTAL on diagnostic stone model and leave to cure (1:30 minutes).



4. AFFINITY CRYSTAL trimmed on labial 5mm past gingival margin and lingually 1mm past anticipated lingual cavo-surface margin.



5. Syringe a thixotropic flowable material directly into the facial/internal aspect of the clear matrix. Start at the incisal edge, working toward the cervical.



6. Spot etch preps for retention. If there are more than two preps, spot etch alternate teeth.



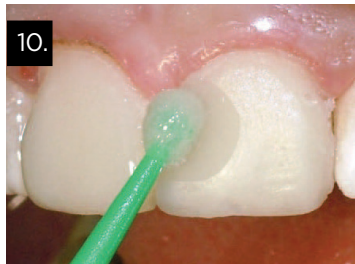
7. Gently place the matrix intraorally and adapt with both light incisal and labial pressure. Light-cure each preparation from the facial side of the matrix for 5 seconds per preparation. Remove the matrix.



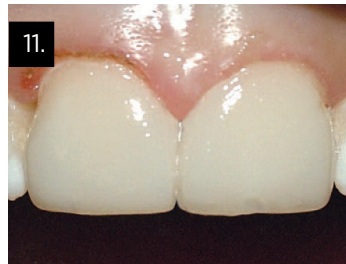
8. Flash will be minimal, any excess will flow over the cervical margin and can be easily removed with a bladed instrument. Light-cure again for 20 seconds/unit.



9. Temporary veneers shown with excess flash peeled off.



10. Apply GLISTEN Provisional Resin Glaze and light-cure.



11. Final temporary veneers.

Dentistry and photography courtesy of Dr. Len Boksmann and Dr. Brad Carson



**glisten**  
PROVISIONAL RESIN GLAZE

### PROVIDES INSTANT SHINE

GLISTEN™ provides a beautiful, glistening shine on your provisional veneers, crowns, bridges, inlays and onlays. Apply and cure, either intraorally or extra-orally, due to its resin-based formula.

**GLISTEN**  
Contains: 1-5mL bottle, instructions/SDS

**CLINICIAN'S CHOICE®**  
DENTAL PRODUCTS INC.

www.clinicianschoice.com